

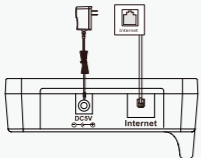
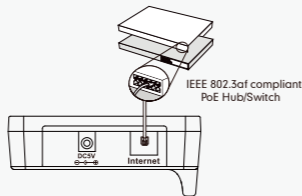


Specification of Yealink W56P

Features	Model	Base	Handset
Products			
Handset number of base		Up to 5 handsets	
Simultaneous voice calls		4	2
SIP Accounts		5	
Indoor Range		20~50m (The ideal distance is 50m)	
Outdoor Range		300m (In ideal conditions)	
Standby Time		400h (In ideal conditions)	
Talk Time		30h (The ideal distance is 30h)	
DECT Standards		CAT-iq2.0	
HD Voice		√	
Speaker		Full Duplex	
Codecs		G.722, G.711μ/A, G.723, G.726, G.729, iLBC	
LCD Size		×	2.4" 240 x 320 TFT, 262K colour
LCD Backlight		×	√
Wall Mountable		√	√
Indicator LED		3	1
Key Backlit		×	√
Hard keys in all		1	25
Soft Keys		×	2
Navigation Keys		×	5
Shortcut Keys (Programmable)		0	6
Phone Features		Auto Intercom, Paging, ECO Mode, ECO Mode+, Redial, Mute, 3-Way Conference, Caller ID Display, Call Hold, Call Waiting, Call Transfer, Call Forward (Always/Busy/No Answer), DND, Voice Mail, Speed Dial, Remote Phonebook	
OpenVPN		√	
Security		HTTPS, TLS (Transport Layer Security), SRTP (RFC3711), 3-level privilege	
Configuration		Configuration via LCD, Configuration via web, Configuration via auto provisioning	
Auto provisioning		TFTP/FTP/HTTP/HTTPS/RPS	
Auto provisioning with PnP		√	
			

Yealink

Charge Up Your Business W56P DECT Phone

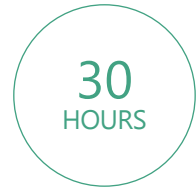
Yealink's upgraded DECT phone W56P is developed to enhance communication for on-the-go workers in various industries such as warehousing, catering and retailing. Featuring a big 2.4-inch color screen, an elegant industrial design, excellent battery performance and other multiple usability and phone management upgrades, the W56P ensures busy workers can enjoy a pleasant user experience and are always online.



www.yealink.com

Excellent Battery Performance Keeps Users "Always Online"

With its advanced Li-ion battery, the W56P boasts industry-leading talk time and standby time. To take the user experience to the next level, it offers quick-charge and easy USB charge features.



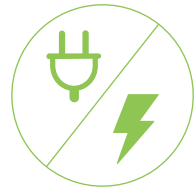
30 HOURS
Talk time

30 hours
Talk time

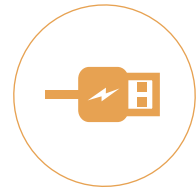


400 HOURS
Standby time

400 hours
Standby time



10 minutes of charging
= 2 hours of talk time



USB Charger Cradle

Simply charge anywhere, any device with USB port



Charged by Yealink IP phones
(SIP-T29G, SIP-T46G and SIP-T48G)

User-centric Design for a More Pleasant Experience

Details matter. The W56P has a larger 2.4-inch 240x320-pixel color screen with backlit that clearly presents an intuitive user interface. The model also features a larger and more comfortable backlit keypad that on-the-go users will find especially convenient to use.



Backlit LCD

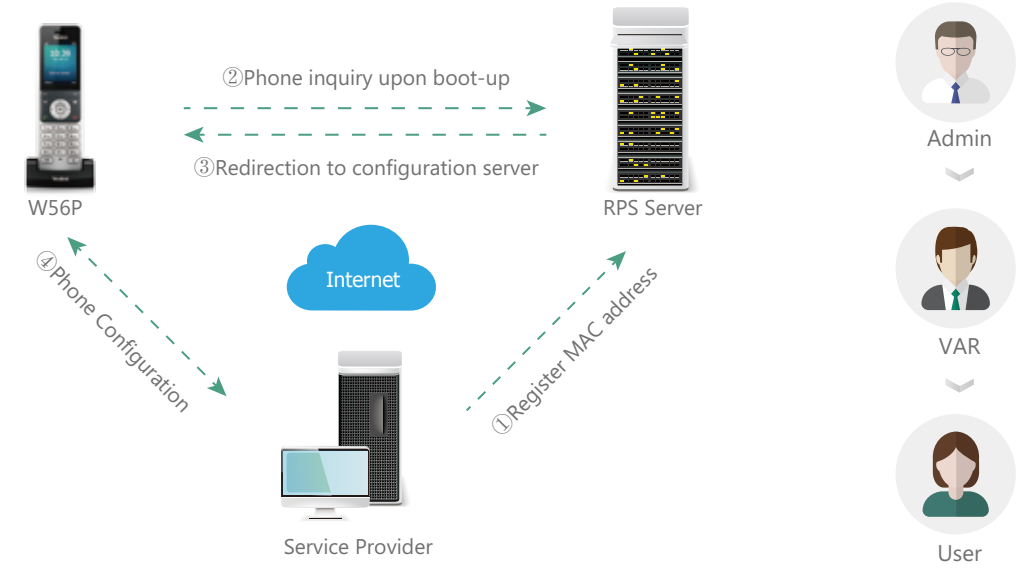
2.4" 240 x 320
color screen

Backlit keypad

Sleek and elegant
industrial design

Effortless Deployment and Flexible Management

The W56P is also an IT-friendly solution. With Yealink's free Redirection and Provisioning Service (RPS), the W56P supports auto provisioning and updates, which greatly simplifies mass deployment. Furthermore, the W56P supports three levels of user access, which allows for the customization of access permission for configuration, bringing greater flexibility and security to phone management.

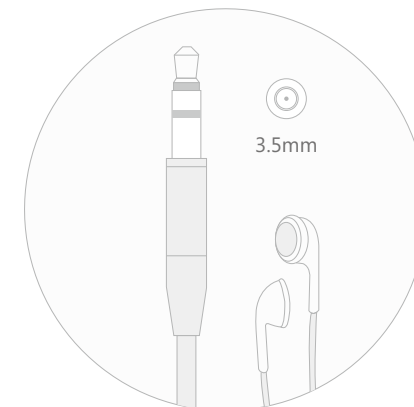


Auto Provisioning and Update

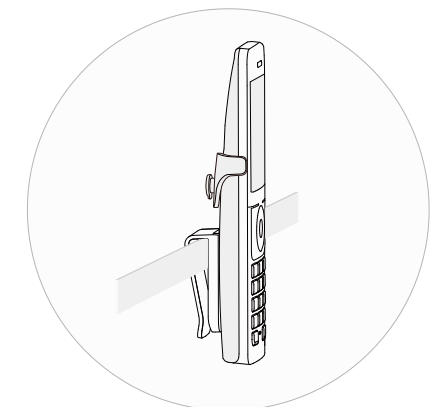
Three Level of Phone Access -
Admin, VAR and User

Additional Convenience

The W56P's 3.5mm standard headset jack connects the phone with a hands-free headset, bringing added convenience to call experience, especially when multitasking. In addition, Yealink's new belt clip makes the W56P wearable when not in use.



Headset connection via 3.5mm jack



Belt Clip